

Volume 3, Issue 1
October 2013

park news



www.buckinghampark-pc.gov.uk

www.facebook.com/BuckinghamParkParishCouncil

Published by Buckingham Park Parish Council



BUCKINGHAM PARK PARISH COUNCIL

Cllr Anders Christensen

Chair
anders_christensen@rocketmail.com
07834 995690

Cllr Eric Martin

Vice Chair
martinericj@sky.com
01296 – 432399

Cllr Ray Towle

towle@greenbee.net
01296 – 336038

Cllr Alison Looker

cllrlooker@btinternet.com
01296 – 330852

Cllr Anthony Poth

apoth@btinternet.com
01296 – 481450

Cllr Pamela Wayte

pamelawayte@btinternet.com
07960 605033

Cllr Hina Pancholi

hinapancholi@gmail.com
01296 – 583739

Cllr Steven Lambert

cllrlambert@hotmail.co.uk
01296 338387

Mr Keith Gray JP, PILCM, MILM

Buckingham Park Community Centre
Jubilee Square
Buckingham Park
Aylesbury

Clerk to the Council

01296 435239 / 07789 586594
clerk@buckinghampark-pc.gov.uk

Chairman's Welcome

Once in a while the development of Buckingham Park gathers momentum and a number of significant changes take place so it becomes really noticeable that things are happening. This Autumn there is quite a lot going on;

We welcome the staff and management of Budgens. At last we have a shop within walking distance! We will also be welcoming the Fish and Chip shop, Barnado's, and Express Tanning & Beauty who will be moving into their units soon. The pharmacy will be moving into the shop on the corner, from its temporary porta cabin, by the end of the year. No news on the shops across from the square though.

Aylesbury Vale District Council and Taylor Wimpey have reached agreement on the leisure space behind the community centre. This will include a playground and Skate Park as well as plenty of open grassed areas. Hopefully the work will start before Christmas and be completed during Spring time. A copy of the plan of the area is on the back cover of this issue.

Work on the link road to Berryfields has commenced, a planning application for the Nursing Home has been submitted, Prince

Rupert Drive is open along its' full length, and the new bus route is now operational.

I would like to thank Jan and her team at the Community Centre. There are now more things to do within our community than ever before and I can highly recommend the breakfast, sandwiches, and snacks that are freshly made to order at the centre.

I must also mention some of the various community groups that do great work but are not always in the public eye such as The Youth Group, Toddler Group, Hope Baptist Church, and the Neighbourhood Action Group. All are run by volunteers who work hard to make Buckingham Park a great place to live.

We continue to improve our communication. If you want to keep in touch with updates between editions of Park News don't forget to look at our website, www.buckinghampark-pc.gov.uk or like us on Facebook, www.facebook.com/BuckinghamParkParishCouncil where we provide regular updates and useful information.

Anders Christensen

Thames Valley Police 'Have Your Say'

The next meeting will be on Thursday 17th October (10.30am -11. 30am at Buckingham Park Community Centre)

Buckingham Park Pharmacy

Did you know that your local pharmacy on Buckingham Park offers a free prescription collection and delivery service? For this, and all your dispensing needs, we are presently situated in the car park between the Berryfields Medical Centre and the Community Centre, although we plan to move into our new shop accommodation in Jubilee Square by mid December. Simply pop in, or we can be contacted by telephone on 07436816386.



The views expressed by individuals in Buckingham Park News are not necessarily the views of Buckingham Park Parish Council. Every effort is made to ensure that all information is accurate at the time of going to press. External advertising in the magazine does not imply an endorsement or promotion of the advertisement, nor its content, products or services by Buckingham Park Parish Council.



fresh

design & print the way it should be
www.freshdps.co.uk

**YOUR LOCAL DESIGN
AND PRINT AGENCY**

**01296
489998**



IT WAS SO NICE TO DEAL WITH SOMEONE IN PERSON

Community Meetings (Open Forum)

Residents are always very welcome to attend our regular monthly Parish Council meetings held in the Community Centre on the first Tuesday of every month commencing at 8pm.

Understandably, these meetings are structured and rather formal in nature and the opportunity for residents to air particular concerns on the night is restricted.

Community engagement is a priority for the Council and in that regard it was agreed at the last Parish Council meeting that a series of Open Forum meetings should be held similar to those that proved

so popular with residents when the Residents Association existed. These meetings will provide a valuable opportunity for people to raise and debate any matters of concern to them as residents of Buckingham Park and engage more personally with Parish Councillors. The intention is that the meetings shall also be attended by all major stakeholders, such as representatives of Thames Valley Police, Housing Associations, AVDC and Buck County Council. The first such meeting will be held in the Community Centre on 22nd October, starting at 7.30pm.

Do come along.

Buckingham Park in Bloom

The Britain in Bloom Judges came in July and Buckingham Park received a Level 1 award. This year the focus was on Jubilee Square and next year the intention is to take in a larger area of Buckingham Park. If you are interested in participating please contact Ray Towle (towle@greenbee.net) as more volunteers are required.

Social impact:

- Building community by working towards a common goal, creating opportunities for increasing understanding and neighbourliness.
- Encouraging individuals to invest in their neighbourhood, contributing to its development by volunteering.
- Reducing crime and anti-social behaviour by fostering a greater respect for and sense of ownership of local spaces.
- Improved health and wellbeing through growing fruit and vegetables, and by creating a safe, pleasant space to exercise.

Environmental impact

- Improving surroundings through planting, clean-up and maintenance.
- Encouraging horticulture, from hanging baskets to community gardens.
- Bringing in environmentally conscious practices such as composting, recycling and biodiversity projects.
- Promoting an interest in the environment, particularly in schools.



Councillor Towle Receiving Buckingham Park's Britain in Bloom Award

New Bus Routes

From the 2nd of September the bus service to Buckingham Park was significantly improved. The bus now runs along the full length of Prince Rupert Drive and new bus stops have been created.

New bus stops have been placed around Buckingham Park where the 'Green Way' footpaths cross Prince Rupert Drive or Colonel Grantham Avenue and at Jubilee Square. If you live along the bus route please remember to use your allocated parking spaces. If parking on the road do leave enough space to let the bus get through.

The main bus service is now the Silver Rider service which continues to run the same route into Aylesbury as before but now links us with Fairford Leys at the far end of the route. This service runs from 07.30am until 18.00 at 15 minute intervals. **This service is no longer hail and ride.* Before and after these times services are run by the number 7 service. This will operate a revised route into Aylesbury through Watermead.

A school bus, number 12, is operating one service to Aylesbury Vale Academy from Buckingham Park in the morning and a return leg in the afternoon.

A link to the new timetable is on www.buckinghampark-pc.gov.uk, on the useful information page.

Quiz Night

Come along to a Quiz Night event at the Buckingham Park Community Centre

Saturday 12th October 2013

Starting at 7pm

Entry cost is £9 per person and includes quiz, meal and cash prizes.

A raffle will be held on the night.

Bar service available.

A Nursing Home for Buckingham Park



An application has been submitted to Aylesbury Vale District Council for permission to build a 64 bed, 3 storey, nursing home on Buckingham Park. The site already has approval in principal but this application is for detailed planning permission. If you would like to view the plans, or submit any comments, please look at the AVDC planning portal (Google AVDC Planning) and search for application 13/02322/APP or search for Culpepper Close. We have also put a link to the planning application on the Events page of our website <http://www.buckinghampark-pc.gov.uk/>

Litter Bins

Residents will observe that litter bins are located at various points throughout the development. Despite this Buckingham Park seems bedevilled with litter which costs the Parish Council (and you as residents) to clean up. Litter is unsightly and gives a poor impression to those who visit. Your Parish Council is pressing for a litter bin adjacent to the pond/bus stop but there may well be other locations that could similarly benefit from a bin. If you know of any such location, please advise one of your Councillor's who will pursue the matter.



Speeding

The roads throughout Buckingham Park have a design speed of 20mph. The sole exceptions are Col Grantham Avenue and Prince Rupert Drive where this is 30mph. Despite this, some vehicles regularly exceed these limits thus endangering other road users and pedestrians. Speeding remains a high priority for action by the Neighbourhood Action Group and Thames Valley Police. If you witness regular offenders, you should report their vehicle registration details to TVP on the non-emergency number 101. The roads throughout the development are narrow, and cars parked at the kerbside means that drivers should be courteous to each other.



Barnado's

Are very pleased to announce that our new charity shop in Jubilee Square, Buckingham Park is now **OPEN**.

Donations of stock (clothing, toys, books etc) will be most welcome.

Volunteers are also needed to help run the shop. So if you have a few hours to spare during the week and fancy getting out and meeting people, we'd love to hear from you.

Quiz Time!!

FIND THE NAMES OF THESE BRITISH TOWNS & CITIES

1. Dark Water **BLACKPOOL.**
2. Beat another town
3. Changing things about
4. Directors order to cast
5. Just a snack.....
6. Something to wear.....
7. The spirit of Coward
8. Coloured transport
9. Just the place for a bargain
10. Bacon past its sell-by date
11. No need to walk here.....
12. South, below the earth
13. Get your water here
14. A pale harbour
15. Fast forest
16. The food is still on the table
17. Well known water heater
18. Not football
19. What the robber said to his victim
20. Kept going
21. Where to go for milk
22. Fool the parson.....
23. Build up the fire.....



Xmas Panto

Xmas seems still so far away, but activity planning must start now if the children of our community are to have a fun filled time. The Parish Council is investigating the possibility of bringing a Xmas pantomime to Buckingham Park. Planning is in its early stages but keep your eyes peeled for further information.



Fancy dress Halloween Party

31st October 2013

Buckingham Park Community Centre

6pm to 7.30pm

Burger & sausage "ghoulie" grub

Punch and other drinks available

An advance purchase ALL TICKET event

(No tickets will be on sale on the night)

**Cost: Adults £3.00
Children £2.00**

Tickets available from the Community
Centre
Get your tickets now!

Buckingham Park Parent & Toddler Group

Please bring your babies and toddlers and join us at the Buckingham Park Community Centre on Thursday mornings from 10:00 - 11:30. For a mere £2 per family, your children can play till their hearts content, have a snack & a sing-song; and you can have a coffee or tea and a natter.

BUCKINGHAM PARK COMMUNITY CENTRE TIMETABLE

DAY	TIME	HIRER/ACTIVITY
Monday	08:15 - 12:45	Big Top Pre-school
	09:00 - 17:00	Worksmart
	13:30 - 14:30	Mum's Bum's & Tum's
	17:00 - 17:45	Kandeez School of Dance - U8 Competitive Freestyle
	17:45 - 18:30	Kandeez School of Dance - Adult Disco, Street & Rock 'n Roll
	18:30 - 19:30	Kandeez School of Dance - 8+ Competitive Freestyle (Invite only)
	19:30 - 20:30	Kandeez School of Dance - Adult Intermediate Tap
	19:30 - 20:30	Choir
	19:30 - 20:30	Bokwa Fitness
	20:30 - 22:30	Badminton - Learn to Play
Tuesday	08:15 - 14:15	Big Top Pre-school
	09:30 - 11:30	Rosemary Connelly
	10:15 - 11:45	Surestart - Baby Massage / Post Natal Group
	13:30 - 15:00	Surestart - Weigh, Stay & Play
	16:00 - 17:00	ZKS Martial Arts
	16:00 - 17:00	Fitness Academy
	17:45 - 19:00	Beavers
	19:00 - 20:30	Cubs
	19:00 - 23:00	Ace Bridge
Wednesday	08:15 - 14:30	Big Top Pre-school
	09:15 - 09:45	Kandeez School of Dance - Melody Bear Baby Ballet (18m - 3yrs)
	09:45 - 10:15	Kandeez School of Dance - Boogie Babies (18m - 3yrs)
	18:00 - 21:30	Buckingham Park Youth Club
	19:45 - 20:45	Fitness & Body Urban Ballet
Thursday	08:15 - 14:30	Big Top Pre-school
	08:30 - 13:00	Boomerang Toy Library (once a month)
	10:00 - 11:30	Buckingham Park Toddler Group
	16:00 - 23:00	Badminton
	17:45 - 18:45	Kaso Studios - Zumba
	19:00 - 23:00	Ace Bridge
Friday	08:15 - 12:45	Big Top Pre-school
	14:00 - 15:00	Messy Play (from Oct)
	16:15 - 17:00	Kandeez School of Dance - 8-12y Ballet Conditioning
	17:00 - 17:45	Kandeez School of Dance - 12+ Ballet Conditioning
	17:45 - 18:30	Kandeez School of Dance - Team Ultraviolet Practice
	18:00 - 21:30	Hope Church Youth Group
Saturday	09:30 - 13:00	Kandeez School of Dance - Ballet & Tap (Various ages)
	13:30 - 23:00	Available for Private Hire
Sunday	10:00 - 13:00	Deeper Life Bible Church
	10:00 - 13:00	Church of Christ
	10:00 - 13:00	Church of God Healing Centre The Oasis
	13:30 - 23:00	Available for Private Hire

Youth Group



Firstly, can I say a huge **“Thank You”** to Buckingham Park Parish Council, Councillor Netta Glover & Councillor Steven Lambert for their kind donations towards the Caldecotte Xperience trip that we in the process of organising for our young members.

This is an outward bound centre and we plan to take a group of children aged 8-11 years for an overnight stay in November where they will get to experience caving, abseiling and much more. Letters to parents detailing the trip will have been given out at our Open Evening on 11th September, and at the group session on 18th September. Participation in this challenging event is, of course, behaviour dependent. We will be asking parent/carers to contribute to the cost but with some funding already secured, together with the proceeds of additional fundraising activities, we hope to keep this to a minimum.

We returned from the summer break on 18th September, with a new look BPYG. We now have a “chill out” zone, procured a Wii with a selection of games, as well as the usual games and activities along with tuck-shop plus lots, lots more.

We have also now changed the attendance criterion to align it to school years. Therefore, Junior section will comprise of school years 3-6 and the Senior session will be for school years 7-11.

It would be lovely if we could get more volunteers or even parent helpers that would like to help out. You do not have to do every week, or session, but it is the commitment and help of us volunteers that enables BPYG to run to the benefit of our children. Please feel free to pop in on a Wednesday evening or you can contact Harriet Jackson Youth Group Leader on **07925104627**

Email jackomcfc@btopenworld.com

The BPYG looks forward to seeing you for another great year of fun.

Chana dal with Courgette



Method:

Soak Chana dal in lukewarm water for an hour. Cook chana dal and courgette with 3 cups of water in a pressure cooker or a pan for approx 20 minutes.

Heat oil in a separate pan. Add mustard seeds and wait until they start popping. Add jeera seeds and mix it to the cooked dal and courgettes. Add all other spices and let it simmer for further 5 minutes. Keep the consistency semi. Garnish with fresh coriander leaves.

Ingredients:

- 1 cup Chana dal
- 1 courgette (washed, cut into small cubes)
- 1/4 teaspoon Turmeric powder
- 1/4 teaspoon dry coriander powder
- 1/4 teaspoon cumin powder
- 1 green chili chopped into fine pieces
- 1 teaspoon fresh ginger, grated
- 1 teaspoon salt
- 1/2 teaspoon mustard seeds
- 1/2 teaspoon cumin seeds (Jeera)
- 2 tablespoon oil

Serving suggestions:

Serve with chapati, make a wrap with tortilla, put in a pitta bread or with plain Rice. Have some fresh salad on the side, mango pickle and papadum if you like.

Benefits:

It is a complete meal with protein, carbohydrates and vitamins. The spices have qualities to help with digestion.

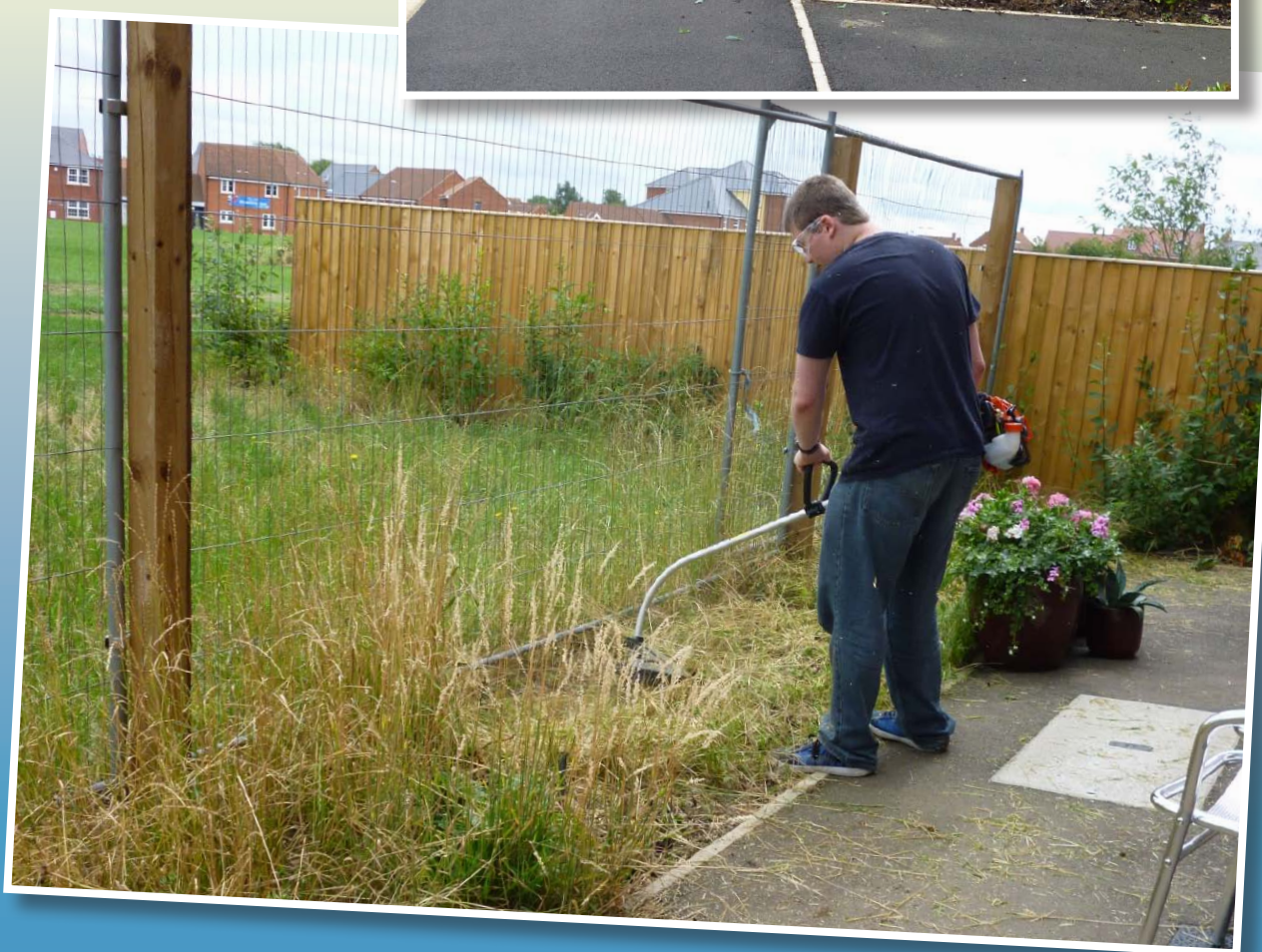
Work Smart Training

Work Smart Training is a Community Interest Company providing work experience opportunities for young people engaged in further education at Aylesbury College.



We operate from Buckingham Park Community Centre, and work with businesses in the Aylesbury area that provide our students with an opportunity to try something new in a work place setting.

Our most recent project involved the Community Centre on Buckingham Park where during the college holiday our students volunteered to maintain a large area of community garden outside the centre and gained valuable experience by painting and decorating inside the centre.



Men at Work – Bin There, Done That

There's nowt like doing it yourself! Last Saturday (28th September) your Council Chairman (Anders Christensen) and Vice Chairman (Eric Martin) - pictured here - successfully transferred the now redundant litter bin adjacent to the bus stop at the north entrance, to its much needed new location by the pond in Prince Rupert Drive. The operation took a little while, but the result better reflects a community need and, unlike our infamous post box opposite, is at least upright.



● Alloy Wheel Repairs

● Bumper Scuffs

● Vandal Scratches

● NEW! Headlamp Repairs

spray smart

Stay Smart & call us now for a free quote

Telephone: 01296 421956 Mobile: 07817 826659



● Colour Correction

● Minor Dent Repairs

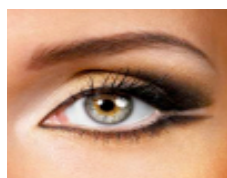
● Motorcycle Cosmetic Repairs

● Parking Sensors

Express Tanning & Beauty

30% Discount Launch Weekend Sat 19th Oct – Sun 20th Oct

Express Tanning & Beauty invites you to our opening launch weekend at our new salon in Jubilee Square. Come & meet our staff and see all our fantastic treatments available. Stock up on all treatments whilst on 30% discount ready to not only look good but feel great as well. Free Glass of bubbly.



Beauty Treatments

- Guinot Hydraclean Facial 30% Off
- HD Brows 30% Off
- Waxing 30% Off
- Vajazzle 30% Off
- Bio Sculpture Nails 30% Off
- OPI GelColour Nails 30% Off
- OPI Nails 30% Off
- Minx Nails 30% Off
- Rock Star Nails 30% Off
- Shellac Nails 30% Off
- Dashing Diva Nails 30% Off
- Spray Tans 30% Off
- Lash Perfect Lashes 30% Off

Tanning (4 x 200 watt + MP3)



We boasts 4 superb top of the range 48 tubes 0.3 compliant G8000 vertical tanning units which have MP3 playing facilities.

Tan & Tone (2 x toning plates)

Our all-new toning plates located in 2 x 200-watt sunrooms so not only do you receive that all over tan you can trim up whilst doing it.

Purchase Online: www.tanningproductsonline.co.uk

Use CODE 1212 for discount from 12.01am Sat 19th

Web: www.express-tanning.co.uk



Vibr8 Pro Plate

Development based on the balancing theory in sport science, the new Vibr8 enhances proprioception, exploiting the muscles your body. The compact new Vibr8 is the ultimate workout machine that shakes you to becoming slimmer, fitter and healthier!

**4 Jubilee Square, Buckingham
Park, Aylesbury, HP19 9DZ**



APAL REFERENCE
2195-LA-03

Notes
This drawing is subject to copyright.
Do not scale from this drawing.
Based on drawing by
Drawing number



LEGEND

Application Boundary

HARD SURFACE FINISHES

- Notes
- Refer to drawing 2194-DT-01 for footpath construction detail
- 2.23m wide path, similar edging to fig. 3m path prepared to accommodate vehicular traffic
- 2.23m wide path, similar edging to fig. 3m path prepared to accommodate vehicular traffic
 - Feature paving: Mosaic single cobble, 60x60mm, stack bond, colour: Pavers in Grey
 - Playmat type resistant safety film

FURNITURE

- Bench Seating: Bronze BS17 4022 3 Slot Timber Seat, Half provided with arm rest.
- Bench Seating: Bronze BS17 4025 Broadside Timber Seat.
- Drop pin: Red Wystone WBC/CH post mounted chate ground anchor
- Letter sign: Cleveron Festival - 901 capacity lined top urethane. Underground slugs 4x4x4.
- Approximate location of light column. Refer to H&L Lighting Consultancy drawings: HPSA12517001 for details. BCC responsibility.

ENCLOSURES

855mm High 2 bar/18g galvanneal steel railing

VEGETATION

- Refer to planting proposals (2195-PP-04) for detail
- Specimen trees - semi mature stock
 - Specimen trees - standard stock
 - Hedge planting
 - Lawn

PLAY EQUIPMENT

- Notes
- Refer to the number adjacent to item of play equipment
- Signage location to play area and skate park to be agreed between manufacturers and AVDC. Including no steps to play area, sign to be kept on back, specified sign range and content with all required details.
- All play equipment and its safety surfacing meets BS EN 1176 & BS EN 1177 and is installed to manufacturers specifications.
1. Aerial Runway
 2. Jungle climber Amazon
 3. Team swing
 4. Safety barrier
 5. Seaside cycle stands
 6. Rock glider
 7. Sea horse Seamus
 8. 1.7m wide slide, 5.3m long
 9. 1.3m high embankment slide
 10. Embankment steps 3.5m long with handrail
 11. Cradle swing
 12. Juniper swing
 13. Trip end
 14. Lullaland timber picnic table
 15. Spinner
 16. Grassy boat
 17. Pit tunnel
- Signage to play area/skate park

NOTES

- For details of play equipment refer to 2195-PP-04
- Play equipment location to be agreed with design
- Skate Park layout to be confirmed with design. For mounting around Skate Park see landscape drawings
- Refer to Visualisation Handbook, Part Structures or Chapter Business drawings, as appropriate, for detailed levels, drainage treatments and access information
- Engineer to provide foundation details in accordance with practice note 4.2 of the NHC, July 2005
- Hard landscape features to be installed in accordance with manufacturer's recommendations

K	Amendments to AVDC comments	05/09/11	NL	NL
J	Update to AVDC comments, amended drawing for clarification of tree furniture	04/06/11	NL	NL
I	Update to AVDC comments, amended drawing for clarification of tree furniture	27/03/11	NL	NL
H	Have options for tree furniture, location of lighting column	22/03/11	NL	NL
G	Amendments to play equipment proposal 2195-PP-04 and associated drawings, amended drawing for clarification of tree furniture	04/06/11	NL	NL
Rev		Date	Drawn	Checked

FOR PLANNING

Allen Pyke Associates

Landscape Architecture, Urban Design, Environmental Planning
The Factory, 2 Acre Road, Kingston upon Thames, Surrey KT2 6EP

T 020 8549 3434 F 020 8547 1075
www.allenpyke.co.uk
KINGSTON UPON THAMES • CAMBRIDGE



Author	Scale
Tom Taylor/Wimpey	1:250@A1
Project: Wealdon Hill Neighbourhood Centre Park	Site/SF
Drawing title: Hard Landscape Proposals	Date: 28/10/11
Drawing Number: 2195-LA-03	Revision: K

